

**HTR1F Antibody (Center)**  
**Purified Rabbit Polyclonal Antibody (Pab)**  
**Catalog # AP21174a****Specification**

---

**HTR1F Antibody (Center) - Product Information**

Application	WB,E
Primary Accession	<a href="#">P30939</a>
Reactivity	Human
Host	Rabbit
Clonality	polyclonal
Isotype	Rabbit IgG
Calculated MW	41709

**HTR1F Antibody (Center) - Additional Information****Gene ID** 3355**Other Names**

5-hydroxytryptamine receptor 1F, 5-HT-1F, 5-HT1F, Serotonin receptor 1F, HTR1F, HTR1EL

**Target/Specificity**

This HTR1F antibody is generated from a rabbit immunized with a KLH conjugated synthetic peptide between 213-248 amino acids from the Central region of human HTR1F.

**Dilution**

WB~~1:4000

E~~Use at an assay dependent concentration.

**Format**

Purified polyclonal antibody supplied in PBS with 0.09% (W/V) sodium azide. This antibody is purified through a protein A column, followed by peptide affinity purification.

**Storage**

Maintain refrigerated at 2-8°C for up to 2 weeks. For long term storage store at -20°C in small aliquots to prevent freeze-thaw cycles.

**Precautions**

HTR1F Antibody (Center) is for research use only and not for use in diagnostic or therapeutic procedures.

**HTR1F Antibody (Center) - Protein Information****Name** HTR1F ([HGNC:5292](#))

**Function** G-protein coupled receptor for 5-hydroxytryptamine (serotonin) (PubMed:[21422162](#), PubMed:[34239069](#), PubMed:[8380639](#), PubMed:[8384716](#)). Also functions as a receptor for various alkaloids and psychoactive substances (PubMed:[21422162](#), PubMed:[8380639](#), PubMed:[8384716](#)).

Receptor for lasmiditan, a drug for the treatment of acute migraine (PubMed:[34239069](#)). Ligand binding causes a conformation change that triggers signaling via guanine nucleotide-binding proteins (G proteins) and modulates the activity of downstream effectors, such as adenylate cyclase (PubMed:[34239069](#)). HTR1F is coupled to G(i)/G(o) G alpha proteins and mediates inhibitory neurotransmission by inhibiting adenylate cyclase activity (PubMed:[34239069](#), PubMed:[35610220](#)).

#### Cellular Location

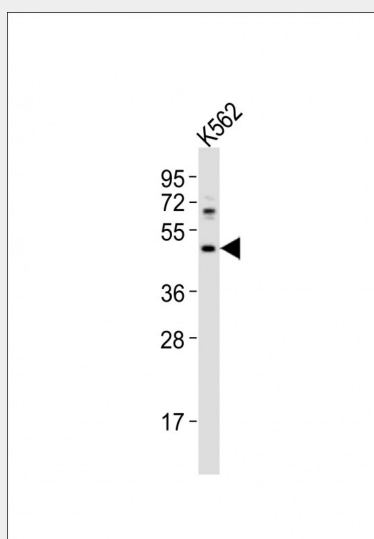
Cell membrane; Multi-pass membrane protein

#### HTR1F Antibody (Center) - Protocols

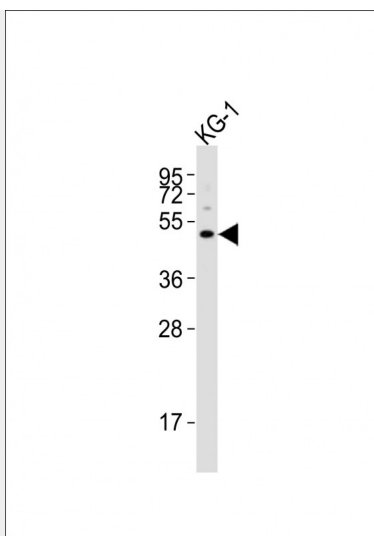
Provided below are standard protocols that you may find useful for product applications.

- [Western Blot](#)
- [Blocking Peptides](#)
- [Dot Blot](#)
- [Immunohistochemistry](#)
- [Immunofluorescence](#)
- [Immunoprecipitation](#)
- [Flow Cytometry](#)
- [Cell Culture](#)

#### HTR1F Antibody (Center) - Images



Anti-HTR1F Antibody (Center) at 1:1000 dilution + K562 whole cell lysates Lysates/proteins at 20 µg per lane. Secondary Goat Anti-Rabbit IgG, (H+L), Peroxidase conjugated at 1/10000 dilution  
Predicted band size : 42 kDa Blocking/Dilution buffer: 5% NFDM/TBST.



Anti-HTR1F Antibody (Center) at 1:4000 dilution + KG-1 whole cell lysates Lysates/proteins at 20 µg per lane. Secondary Goat Anti-Rabbit IgG, (H+L), Peroxidase conjugated at 1/10000 dilution Predicted band size : 42 kDa Blocking/Dilution buffer: 5% NFDM/TBST.

### **HTR1F Antibody (Center) - Background**

G-protein coupled receptor for 5-hydroxytryptamine (serotonin). Also functions as a receptor for various alkaloids and psychoactive substances. Ligand binding causes a conformation change that triggers signaling via guanine nucleotide-binding proteins (G proteins) and modulates the activity of down-stream effectors, such as adenylate cyclase. Signaling inhibits adenylate cyclase activity.

### **HTR1F Antibody (Center) - References**

Lovenberg T.W.,et al.Proc. Natl. Acad. Sci. U.S.A. 90:2184-2188(1993).  
Adham N.,et al.Proc. Natl. Acad. Sci. U.S.A. 90:408-412(1993).  
Puhl H.L. III,et al.Submitted (APR-2002) to the EMBL/GenBank/DDBJ databases.  
Muzny D.M.,et al.Nature 440:1194-1198(2006).  
Nichols D.E.,et al.Chem. Rev. 108:1614-1641(2008).